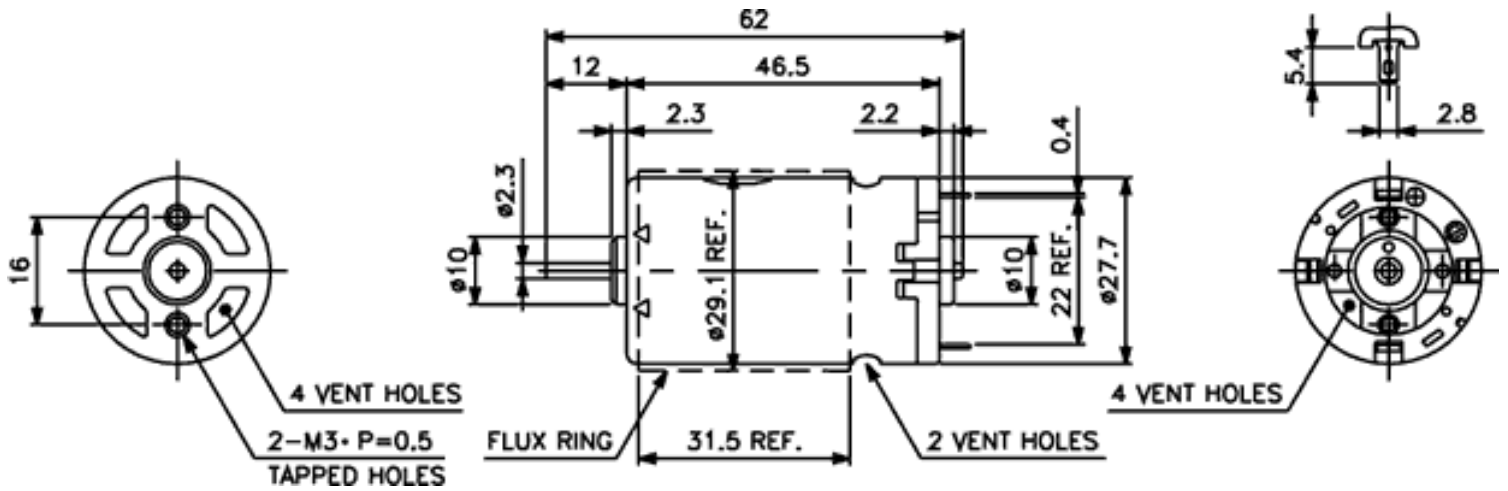




Weight: 97g (approx)

Dimensions (mm)



Specification

Model No. How to read the model numbers	No Load			Max Efficiency							Stall			
	Voltage	Speed	Current	Speed	Torque			Current	Output	Eff.	Torque			Current
	V	RPM	A	RPM	mN-m	g-cm	oz-in	A	W	%	mN-m	g-cm	oz-in	A
NN2746-055-GF-2	4	4900	0.3	4100	8.75	89.3	1.24	1.45	3.77	65.1	53.6	547	7.60	7.34
NN2746-062-GF-5	6	3600	0.12	2900	5.72	58.3	0.81	0.47	1.74	61.5	29.4	300	4.17	1.93
NN2746-070-GF-5	12	6900	0.12	5850	8.55	87.2	1.21	0.65	5.25	67.4	56.2	573	7.96	3.60
NN2746-280-GF-3	24	6000	0.06	5050	9.00	91.8	1.28	0.29	4.78	67.6	56.8	580	8.06	1.54

Characteristic Curves