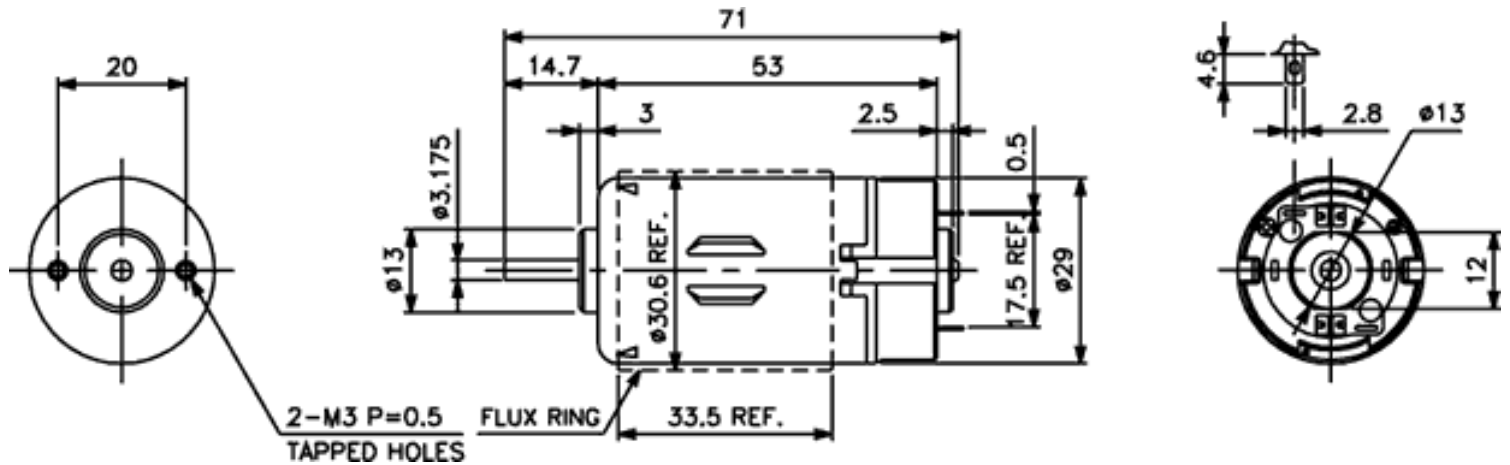




Weight: 130g (approx)

Dimensions (mm)



Specification

Model No. How to read the model numbers	No Load			Max Efficiency							Stall			
	Voltage	Speed	Current	Speed	Torque			Current	Output	Eff.	Torque			Current
	V	RPM	A	RPM	mN-m	g-cm	oz-in	A	W	%	mN-m	g-cm	oz-in	A
NN2953-038-GF-3	2.4	3800	0.65	3080	11.9	121	1.68	2.66	3.84	60.0	62.2	635	8.82	11.2
NN2953-235-G-3	12	4000	0.13	3100	10.1	104	1.44	0.47	3.30	58.9	45.1	460	6.39	1.63
NN2953-290-GF-3	24	5230	0.075	4380	14.1	144	2.00	0.40	6.50	67.7	86.8	886	12.31	2.07
NN2953-460-G-3	24	4080	0.067	3150	9.97	99.9	1.39	0.24	3.24	57.1	43.1	440	6.11	0.81

Characteristic Curves