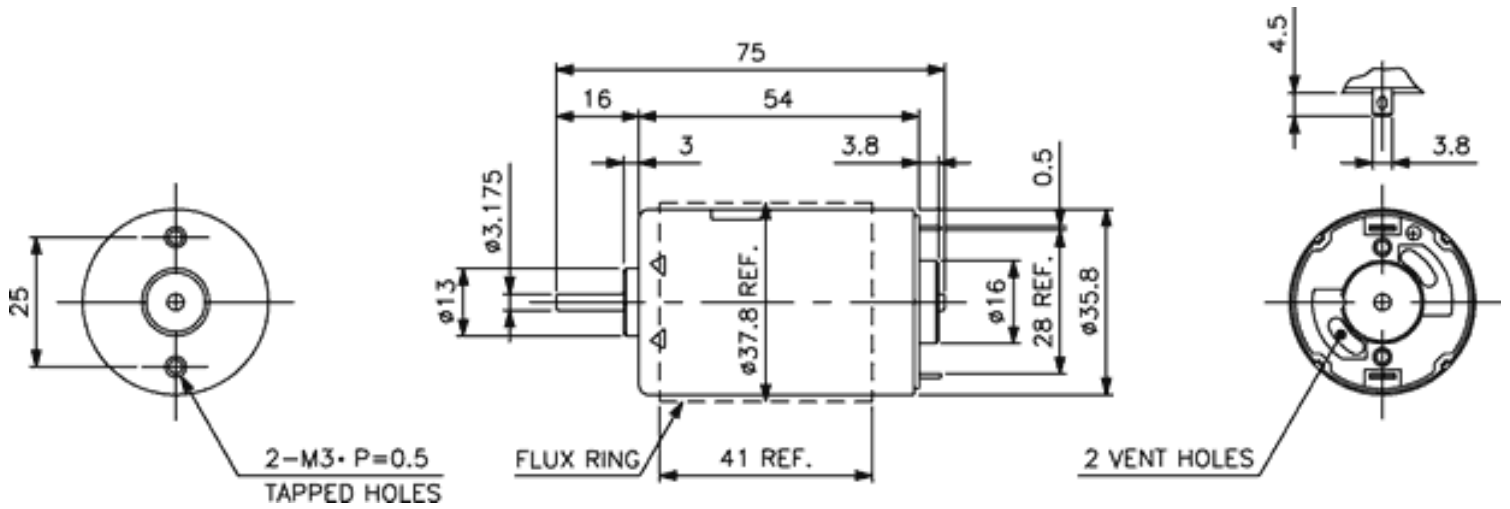




Weight: 146g (approx)

Dimensions (mm)



Specification

Model No.	No Load			Max Efficiency							Stall			
	Voltage	Speed	Current	Speed	Torque			Current	Output	Eff.	Torque			Current
How to read the model numbers	V	RPM	A	RPM	mN-m	g-cm	oz-in	A	W	%	mN-m	g-cm	oz-in	A
N3645-022-G-5	4.8	8900	0.6	7300	11.9	122	1.69	3.06	9.15	62.2	66.3	677	9.40	14.3
N3645-025-G-5	7.2	11700	0.6	9900	15.9	162	2.26	3.54	16.6	65.0	104	1060	14.7	19.7
N3645-245-GF-5	12	1740	0.05	1340	7.23	73.8	1.02	0.17	1.02	49.4	31.5	321	4.46	0.58
N3645-490-GF-5	24	1720	0.025	1320	7.02	71.6	0.99	0.08	0.97	48.1	30.2	308	4.28	0.28

Characteristic Curves