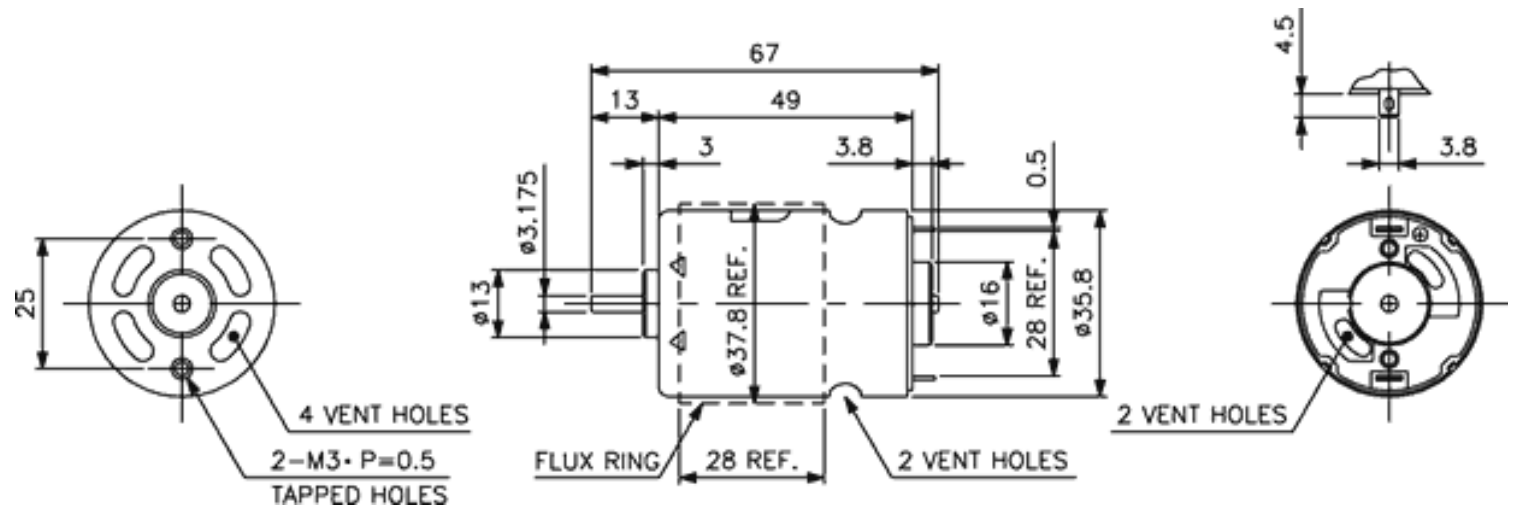




Weight: 190g (approx)

Dimensions (mm)



Specification

Model No. How to read the model numbers	No Load			Max Efficiency							Stall			
	Voltage	Speed	Current	Speed	Torque			Current	Output	Eff.	Torque			Current
	V	RPM	A	RPM	mN-m	g-cm	oz-in	A	W	%	mN-m	g-cm	oz-in	A
N3649-027-G-3	7.2	16800	0.7	15000	15.7	161	2.23	5.09	24.8	67.6	147	1500	20.8	41.7
N3649-050-G-3	12	15300	0.55	13300	17.3	177	2.46	3.17	24.2	63.7	132	1350	18.8	20.6
N3649-110-GF-5	12	3400	0.08	2880	11.7	119	1.66	0.44	3.54	66.8	76.7	783	10.9	2.45
N3649-225-G-3	12	3400	0.1	2850	12.1	123	1.71	0.49	3.62	61.0	74.8	763	10.6	2.54
N3649-066-WGF-5	12.8	5700	0.2	4900	21.4	218	3.03	1.24	11.0	69.5	153	1560	21.6	7.60
N3649-053-G-5	13	9300	0.23	8130	16.6	169	2.35	1.57	14.2	69.6	131	1340	18.7	10.8
N3649-134-G-5	24	5970	0.09	5150	17.7	180	2.51	0.56	9.57	70.7	128	1310	18.2	3.53
N3649-238-G-5	24	3720	0.05	3060	10.8	110	1.53	0.24	3.48	61.3	61	624	8.67	1.10