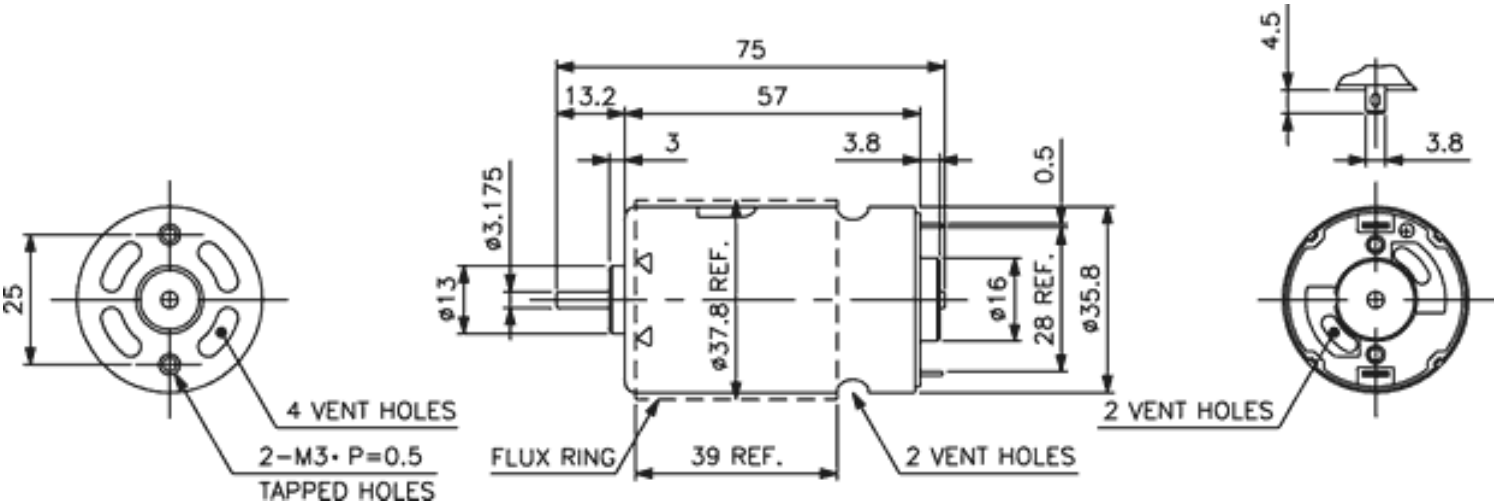




Weight: 220g (approx)

Dimensions (mm)



Specification

Model No.	No Load			Max Efficiency							Stall			
	Voltage	Speed	Current	Speed	Torque			Current	Output	Eff.	Torque			Current
	V	RPM	A	RPM	mN-m	g-cm	oz-in	A	W	%	mN-m	g-cm	oz-in	A
N3657-017-G-5	6	9000	0.6	7800	20.5	209	2.91	3.91	16.8	71.7	154	1570	21.8	25.4
N3657-023-GF-3	7.2	14650	1.2	12900	28.0	25	3.97	7.48	37.9	70.4	234	2390	33.2	53.8
N3657-066-WGF-5	12	4150	0.15	3550	24.1	246	3.41	1.07	8.98	70.1	167	1700	23.6	6.50
N3657-145-GF-3	12	3900	0.13	3300	17.6	179	2.49	0.76	6.10	66.5	114	1170	16.2	4.28
N3657-057-WG-5	13	5180	0.18	4450	22.7	232	3.22	1.18	10.6	69.5	162	1660	23.0	7.33
N3657-166-WGF-5	24	3000	0.06	2650	17.8	181	2.52	0.30	4.95	68.2	152	1560	21.6	2.14
N3657-225-GF-3	24	5200	0.08	4580	20.0	204	2.84	0.53	9.62	75.4	167	1700	23.6	3.84
N3657-065-WGF-8	36	7100	0.15	6350	31.0	316	4.39	0.80	20.69	71.4	294	3000	41.6	6.35