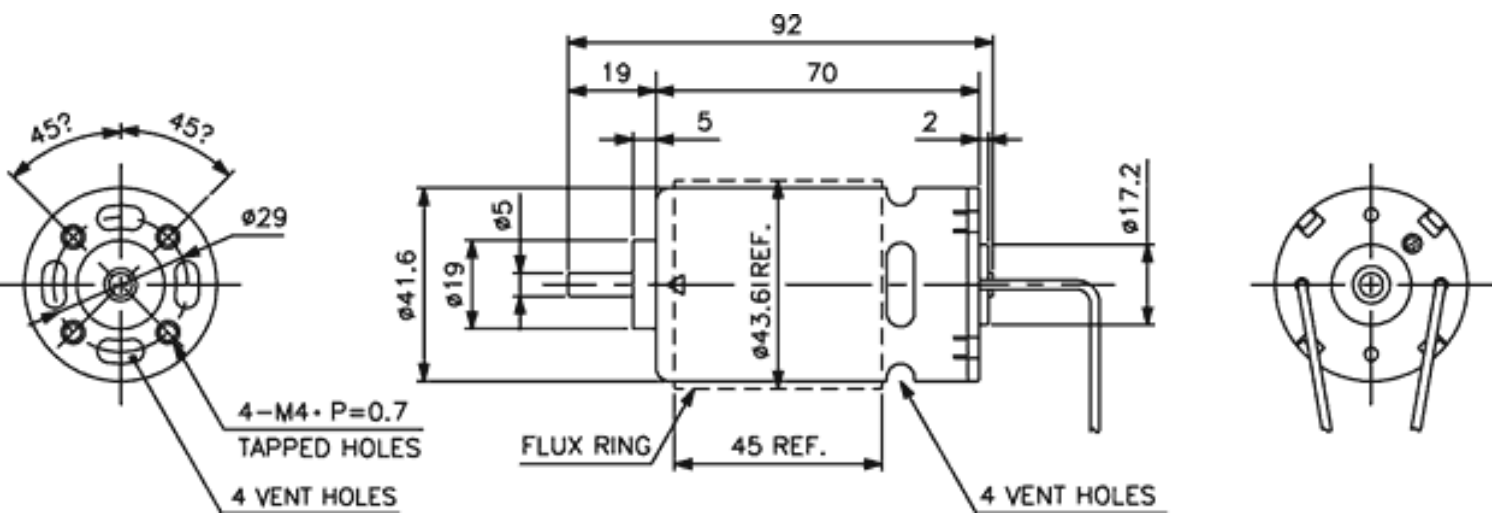




Weight: 350g (approx)

Dimensions (mm)



Specification

Model No.	No Load			Max Efficiency							Stall			
	Voltage	Speed	Current	Speed	Torque			Current	Output	Eff.	Torque			Current
	V	RPM	A	RPM	mN-m	g-cm	oz-in	A	W	%	mN-m	g-cm	oz-in	A
4270-008-WGF-7	9.6	12500	1.46	11100	73.5	750	10.4	12.1	85.7	74.1	658	6720	93.3	96.4
4270-043-WGF-7	10	2410	0.19	2040	31.3	320	4.44	1.02	6.71	65.8	206	2100	29.2	5.65
4270-007-WGF-7	12	18390	2.17	16400	80.8	825	11.5	15.7	139	73.9	746	7610	106	127
4270-008-WGF-8	14.4	15930	1.65	14100	96.8	988	13.7	13.2	143	75.2	845	8620	120	103
4270-010-WGF-7	18	20590	2.0	18200	101	1033	14.3	13.7	194	78.3	872	8900	124	103
4270-070-WG-7	24	4220	0.14	3650	38.9	396	5.51	0.86	14.9	72.2	289	2950	41.0	5.49
4270-033-WGF-7	24	7580	0.32	6700	65.3	666	9.25	2.59	46.0	74.1	562	5730	79.6	19.8
4270-084-WGF-7	32	4020	0.11	3500	4.3	452	6.27	0.71	16.3	71.8	340	3470	48.2	4.73