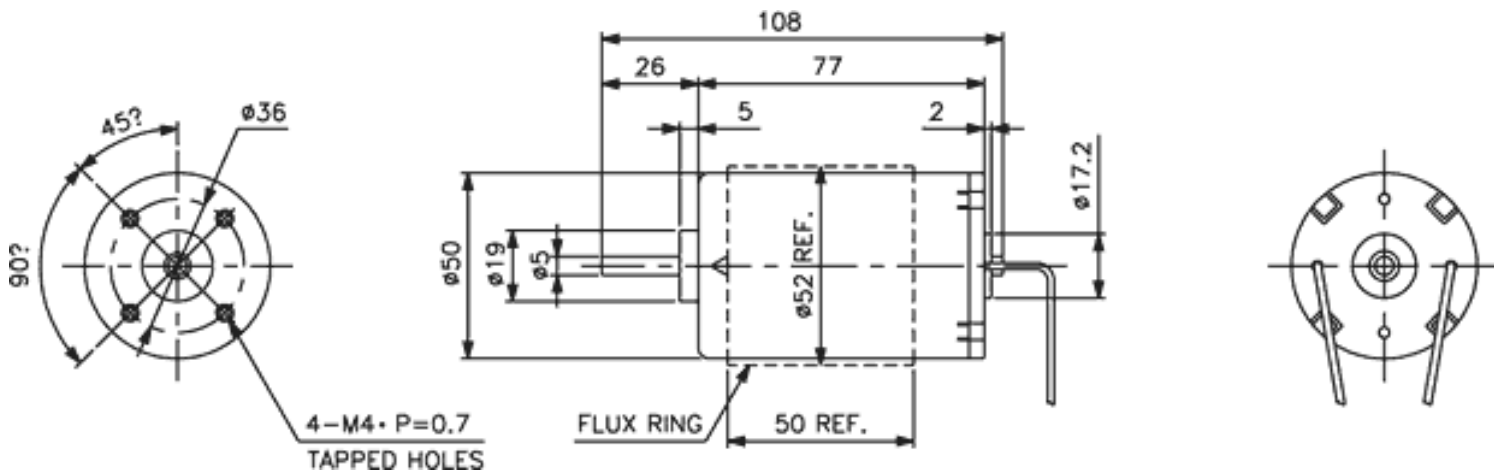




Weight: 550g (approx)

Dimensions (mm)



Specification

Model No.	No Load			Max Efficiency							Stall			
	Voltage	Speed	Current	Speed	Torque			Current	Output	Eff.	Torque			Current
How to read the model numbers	V	RPM	A	RPM	mN-m	g-cm	oz-in	A	W	%	mN-m	g-cm	oz-in	A
5077-051-GF-7	6	1050	0.19	830	25.0	255	3.54	0.72	2.18	50.2	119	1220	16.9	2.73
5077-053-GF-7	10.5	2080	0.3	1680	44.0	449	6.24	1.34	7.75	54.9	227	2320	32.2	5.68
5077-051-GF-7	11	2160	0.22	1830	44.3	453	6.28	1.15	8.53	67.6	287	2930	40.7	6.20
5077-028-G-7	12	4890	0.38	4250	44.8	457	6.35	2.42	20.0	69.0	341	3480	48.4	15.9
5077-059-GF-7	12	2050	0.20	1725	47.4	83	6.71	1.05	8.59	68.3	300	3060	42.5	5.54
5077-028-GF-7	14.4	4910	0.35	4350	66.8	681	9.46	2.80	30.5	75.6	583	5950	82.6	21.7
5077-039-GF-7	24	6080	0.3	5250	75.9	774	10.8	2.30	41.9	76.0	559	5700	79.2	15.0
5077-115-GF-7	24	2040	0.08	1760	43.6	445	6.18	0.48	8.07	69.6	318	3240	45.0	3.04