



IRON CORE DC MOTOR

73/183 watt

M1443_

TRIDENT ENGINEERING LIMITED
Trident House, King Street Lane,
Winnersh, Wokingham,
Berkshire, RG41 5AS

Telephone: 0118 978 6444

Fax: 0118 977 6345

Email: sales@tridenteng.co.uk

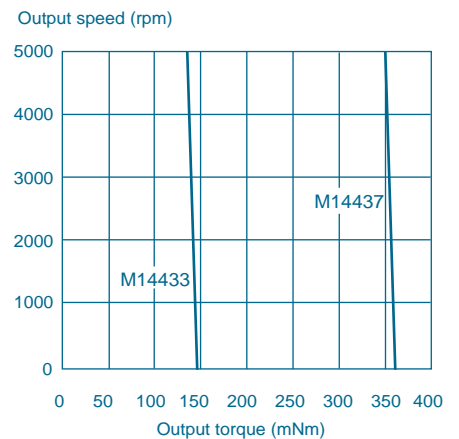
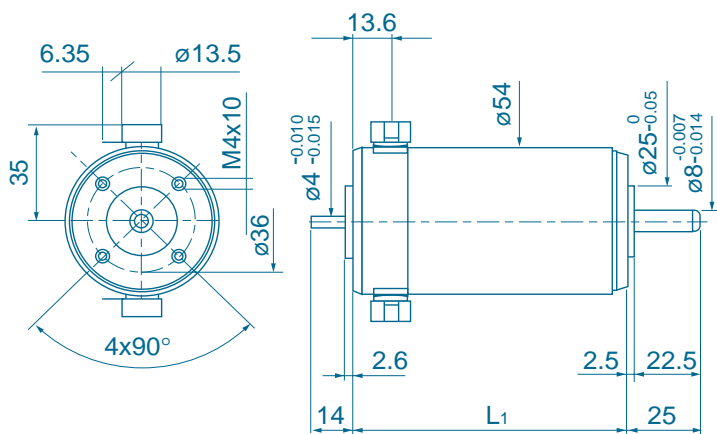
www.tridenteng.co.uk

Motor types		3	7
Measured values			
1. Measuring voltage	Volt	24	24
2. No-load speed	rpm	3500	4100
3. Stall torque	mNm (oz-in)	1100 (155)	2750 (389)
4. Average no-load current	mA	240	380
Max. recommended values			
5. Max. peak current	A	21	77
6. Max. continuous current	A	2.3	6.6
7. Max. continuous torque	mNm (oz-in)	150 (21)	370 (52)
8. Max. angular acceleration	10 ³ rad/s ²	61	85
Intrinsic parameters			
9. Back-EMF constant	V/1000 rpm	6.8	5.8
10. Torque constant	mNm/A (oz-in/A)	65.4 (9.26)	55.7 (7.88)
11. Terminal resistance	ohm	1.4	0.4
12. Motor regulation R/k ²	10 ³ /Nms	0.327	0.129
13. Rotor inductance	mH	2.3	0.6
14. Rotor inertia	kgm ² . 10 ⁻⁷	212	473
15. Mechanical time constant	ms	7	5
16. Motor length L ₁	mm	94	145
Thermal parameters			
17. Thermal time constant	minutes	24	32
18. Thermal res. rotor-body	°C/W	3.1	2
19. Thermal res. body-ambient	°C/W	5.1	3

Product combinations

Gearheads GP62 (This catalogue)
R40 (API Motion catalogue)

Encoders HEDS 5540



Notes