



# SPUR GEARHEAD

TRIDENT ENGINEERING LIMITED  
 Trident House, King Street Lane,  
 Winnersh, Wokingham,  
 Berkshire, RG41 5AS

Telephone: 0118 978 6444

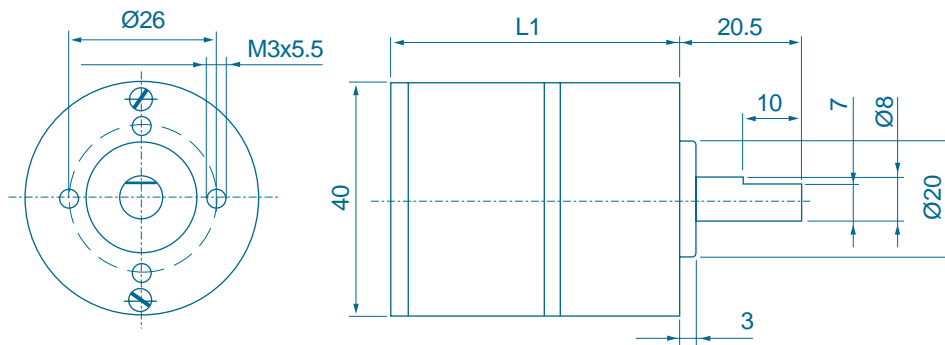
Fax: 0118 977 6345

Email: [sales@tridenteng.co.uk](mailto:sales@tridenteng.co.uk)

[www.tridenteng.co.uk](http://www.tridenteng.co.uk)

GS40.\_ \_ \_ \_

General data				Product combinations				
Bearing on output shaft (standard sleeve bearings)	sleeve	ball		2-40/07	2-40/12			
Maximum radial load 8 mm from mounting plane	80	150	N					
Maximum axial load	80	150	N					
Maximum press on force	200	200	N					
Radial play	<0.05	<0.01	mm					
Axial play	0.05-0.25	<0.01	mm					
Maximum static torque	8	8	Nm					
Max. recom. input speed	4000	4000	rpm					
Backlash at no load	1	1	°					
Backlash at 0.3 Nm	1.5	1.5	°					
Temperature range	-30/+65	-30/+65	°C					
					Options			
					Ball bearings	Custom shafts		
Gearhead Order No	Ratio	Number of stages	Efficiency [%]	Maximum torque continuous [Nm]	Maximum torque intermittent [Nm]	Direction of rotation w.r.t. motor	Weight [g]	L1 [mm]
GS40.0005	5:1	2	85	0.8	1.5	=	120	40
GS40.0010	10:1	3	78	1.0	2.0	≠	125	40
GS40.0015	15:1	3	78	1.0	2.0	≠	125	40
GS40.0020	20:1	4	72	1.5	2.0	=	145	50
GS40.0030	30:1	4	72	1.5	3.0	=	145	50
GS40.0045	45:1	4	72	1.5	3.0	=	145	50
GS40.0060	60:1	5	68	2.0	4.0	≠	150	50
GS40.0090	90:1	5	68	2.0	4.0	≠	150	50
GS40.0135	135:1	5	68	2.0	5.0	≠	150	50
GS40.0180	180:1	6	66	3.0	5.0	=	155	50
GS40.0270	270:1	6	66	3.0	6.0	=	155	50
GS40.0405	405:1	6	66	4.0	7.0	=	155	50



### Notes