



SPUR GEARHEAD

TRIDENT ENGINEERING LIMITED
Trident House, King Street Lane,
Winnersh, Wokingham,
Berkshire, RG41 5AS

Telephone: 0118 978 6444

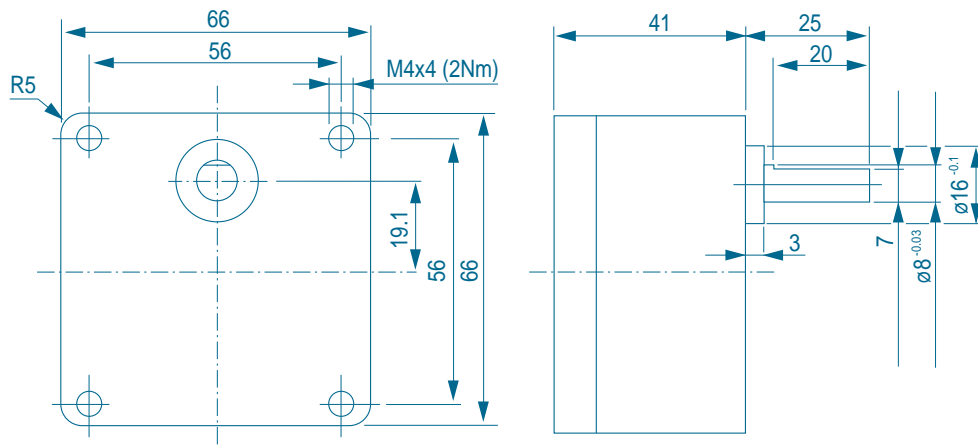
Fax: 0118 977 6345

Email: sales@tridenteng.co.uk

www.tridenteng.co.uk

GS66._ _ _ _

| General data | | | | Product combinations | | | |
|--|--------|------------------|----------------|--------------------------------|----------------------------------|------------------------------------|------------|
| Spur Gearhead | | | Straight teeth | | | | 2-66/25 |
| Bearing on output shaft | | | sleeve | | | | |
| Maximum radial load 5mm from mounting face | | | 25 | N | | | |
| Maximum axial load | | | 20 | N | | | |
| Maximum press on force | | | 200 | N | | | |
| Radial play | | | <0.05 | mm | | | |
| Axial play | | | 0.05-0.250 | mm | | | |
| Maximum static torque | | | 6 | Nm | | | |
| Max. recommended input speed | | | 3000 | rpm | | | |
| Backlash at no load | | | 2 | ° | | | |
| Backlash at nominal load | | | 3 | ° | | | |
| Temperature range | | | -30/+65 | °C | | | |
| Gearhead Order No | Ratio | Number of stages | Efficiency [%] | Maximum torque continuous [Nm] | Maximum torque intermittent [Nm] | Direction of rotation w.r.t. motor | Weight [g] |
| GS66.0005 | 5:1 | 3 | 70 | 1.4 | 1.6 | ≠ | 460 |
| GS66.0012 | 12.5:1 | 3 | 70 | 1.5 | 2.0 | ≠ | 460 |
| GS66.0025 | 25:1 | 4 | 65 | 2.0 | 2.4 | = | 480 |
| GS66.0050 | 50:1 | 4 | 65 | 2.8 | 3.4 | = | 480 |
| GS66.0100 | 100:1 | 5 | 60 | 3.5 | 4.4 | ≠ | 500 |
| GS66.0125 | 125:1 | 5 | 60 | 3.8 | 4.7 | ≠ | 500 |
| GS66.0250 | 250:1 | 6 | 55 | 4.4 | 5.2 | = | 520 |
| GS66.0500 | 500:1 | 6 | 55 | 4.7 | 5.6 | = | 520 |



Notes