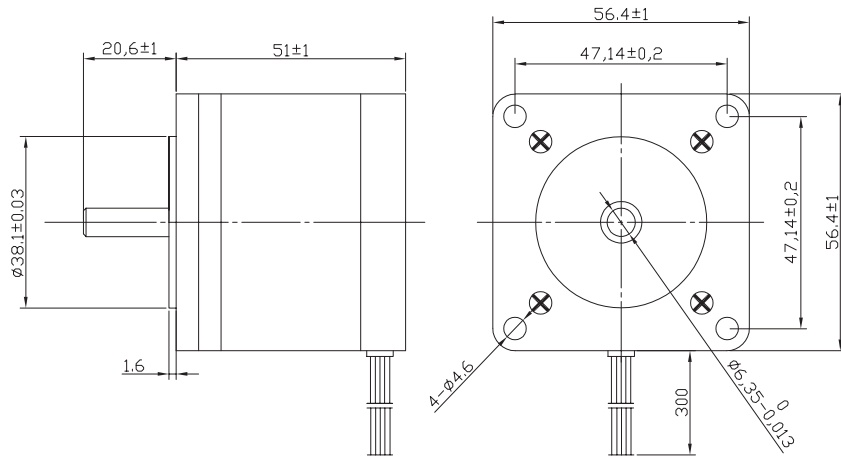


Stepper Motor 57S51 High Torque Hybrid



Characteristics

STEP ANGLE
1,8°

STEP ANGLE ACCURACY
± 5%

INSULATION CLASS
B

AMBIENT TEMPERATURE
-20°C +50°C

TEMP. RISE
80°C MAX (RATED CURRENT, 2 PHASE ON)

INSULATION RESISTANCE
100 M OHM MIN. 500 VDC

DIELECTRIC STRENGTH
500 VAC FOR ONE MINUTE

SHAFT RADIAL PLAY
0,02 MAX (450 G LOAD)

SHAFT AXIAL PLAY
0,08 MAX. (450 G LOAD)

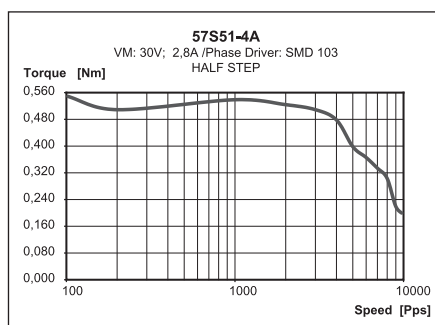
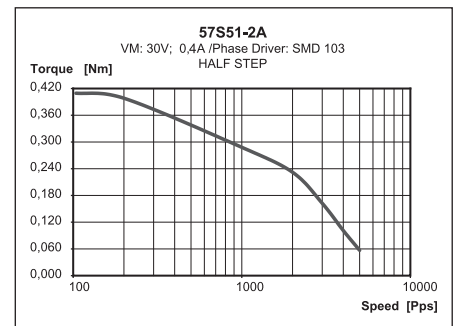
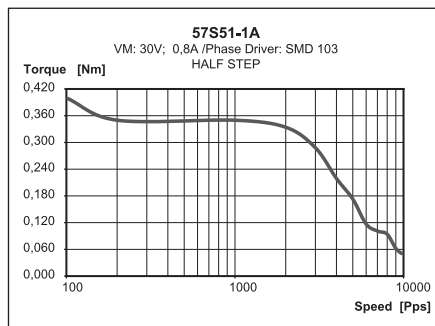
MAX RADIAL FORCE
75 N (20 MM FROM FRONT FLANGE)

MAX AXIAL FORCE
15 N

Specification

Model		57S41-1A	57S41-2A	57S41-4A
1	RATED VOLTAGE V	6	12	2,38
2	CURRENT/PHASE A	0,85	0,42	2,8
3	RESISTANCE/PHASE Ω	7,1	29	0,85
4	INDUCTANCE/PHASE mH	9	36	2,1
5	HOLDING TORQUE Nm	0,497	0,497	0,69
6	ROTOR INERTIA g-cm ²	110	110	110
7	WEIGHT KG	0,6	0,6	0,6
8	NUMBER OF LEADS N°	6	6	4

Speed vs. Torque Characteristics



Connection

LEAD N°	COLOR	GAUGE	FUNCTION
1	BLACK	UL1430 AWG22	PHASE A
2	GREEN	UL1430 AWG22	PHASE A-
3	RED	UL1430 AWG22	PHASE B
4	BLUE	UL1430 AWG22	PHASE B-
UNIPOLAR MOTOR			
5	YELLOW	UL1430 AWG22	COM PHASE A
6	WHITE	UL1430 AWG22	COM PHASE B