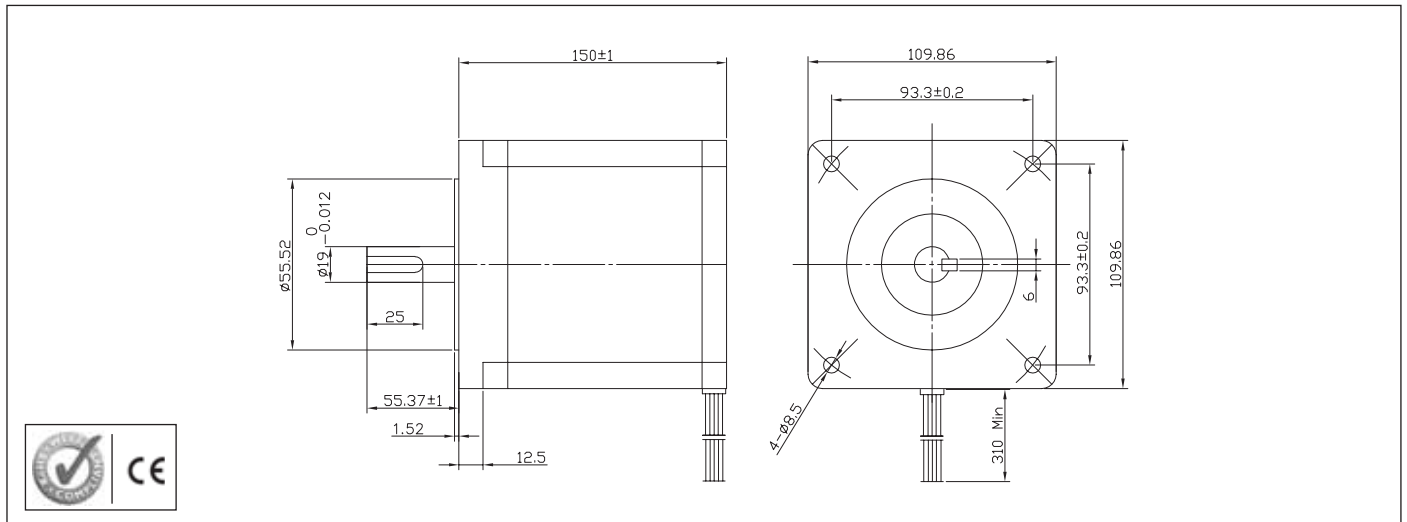


# Stepper Motor 110SH150 High Torque Hybrid



## Characteristics

STEP ANGLE  
1,8°

STEP ANGLE ACCURACY  
± 5%

INSULATION CLASS  
B

AMBIENT TEMPERATURE  
-20°C +50°C

TEMP. RISE  
80°C MAX (RATED CURRENT, 2 PHASE ON)

INSULATION RESISTANCE  
100 M OHM MIN. 500 VDC

DIELECTRIC STRENGTH  
820 VAC FOR ONE MINUTE

SHAFT RADIAL PLAY  
0,02 MAX (450 G LOAD)

SHAFT AXIAL PLAY  
0,08 MAX. (450 G LOAD)

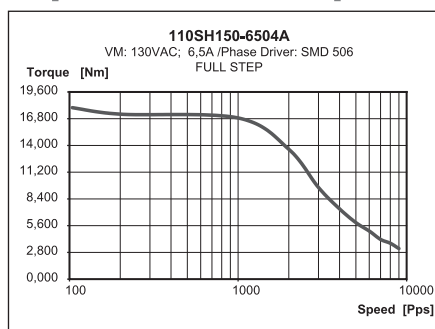
MAX RADIAL FORCE  
220 N (20 MM FROM FRONT FLANGE)

MAX AXIAL FORCE  
60 N

## Specification

Model		110SH150-6504A			
1	RATED VOLTAGE V	5,2	-	-	-
2	CURRENT/PHASE A	6,5	-	-	-
3	RESISTANCE/PHASE Ω	0,8	-	-	-
4	INDUCTANCE/PHASE MH	15	-	-	-
5	HOLDING TORQUE NM	22	-	-	-
6	ROTOR INERTIA G-CM <sup>2</sup>	10900	-	-	-
7	WEIGHT KG	8,4	-	-	-
8	NUMBER OF LEADS N°	4	-	-	-

## Speed vs. Torque Characteristics



## Connection

LEAD N°	COLOR	GAUGE	FUNCTION
1	RED	UL1430 AWG18	PHASE A
2	WHITE	UL1430 AWG18	PHASE A-
3	YELLOW	UL1430 AWG18	PHASE B
4	GREEN	UL1430 AWG18	PHASE B-