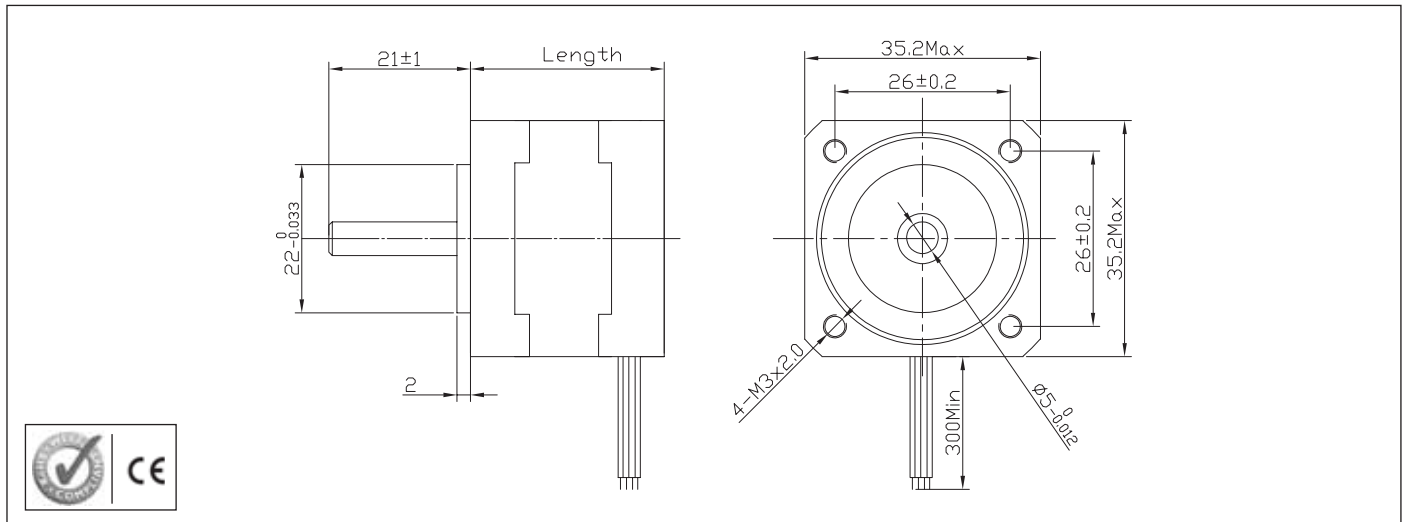


Stepper Motor 35SH High Torque Hybrid



Characteristics

STEP ANGLE
1,8°

STEP ANGLE ACCURACY
± 5%

INSULATION CLASS
B

AMBIENT TEMPERATURE
-20°C +50°C

TEMP. RISE
80°C MAX (RATED CURRENT, 2 PHASE ON)

INSULATION RESISTANCE
100 M OHM MIN. 500 VDC

DIELECTRIC STRENGTH
500 VAC FOR ONE MINUTE

SHAFT RADIAL PLAY
0,02 MAX (450 G LOAD)

SHAFT AXIAL PLAY
0,08 MAX. (450 G LOAD)

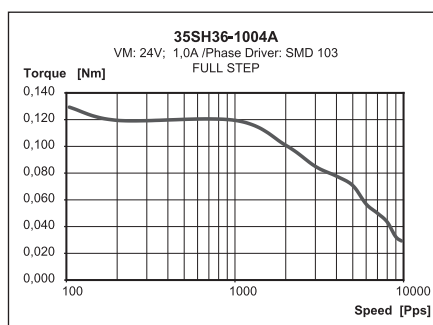
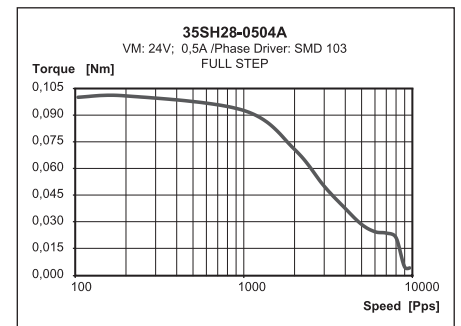
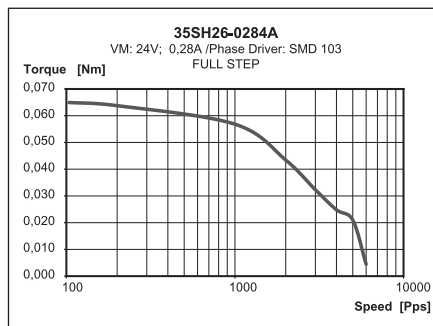
MAX RADIAL FORCE
28 N (20 MM FROM FRONT FLANGE)

MAX AXIAL FORCE
10 N

Specification

Model	35SH26-0284A	35SH28-0504A	35SH36-1004A
1 RATED VOLTAGE V	7,4	10	2,7
2 CURRENT/PHASE A	0,28	0,5	1
3 RESISTANCE/PHASE Ω	26	20	2,7
4 INDUCTANCE/PHASE mH	27	14	4,3
5 HOLDING TORQUE Nm	0,07	0,1	0,14
6 ROTOR INERTIA g-cm²	10	11	14
7 WEIGHT Kg	0,13	0,14	0,18
8 NUMBER OF LEADS N°	4	4	4
9 LENGHT MM	26	28	36

Speed vs. Torque Characteristics



Connection

LEAD N°	COLOR	GAUGE	FUNCTION
1	BLACK	UL1430 AWG26	PHASE A
2	GREEN	UL1430 AWG26	PHASE A-
3	RED	UL1430 AWG26	PHASE B
4	BLUE	UL1430 AWG26	PHASE B-
UNIPOLAR MOTOR			
5	YELLOW	UL1430 AWG26	COM PHASE A
6	WHITE	UL1430 AWG26	COM PHASE B