

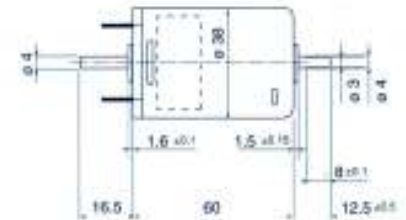
3-38/14 + GS38



3-38/14**

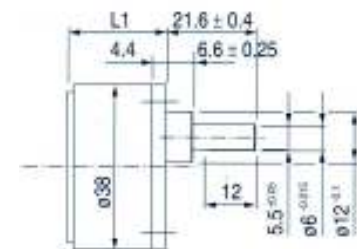
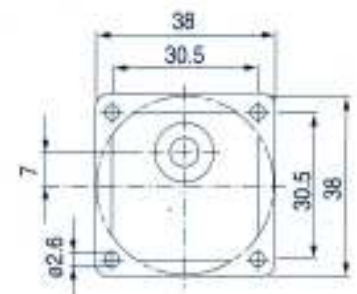
| | | 12 | 24 |
|-----------------|-------|-------|-------|
| Voltage | V | 12 | 14 |
| Power Output | W | 13.9 | 13.2 |
| Rated Torque | mNm | 24.5 | 24.5 |
| Rated Speed | r/min | 5,400 | 5,150 |
| Rated Current | mA | 1,660 | 850 |
| No load Speed | r/min | 6,600 | 6,300 |
| No load Current | mA | 205 | 110 |
| Starting Torque | mNm | 137 | 134 |
| Torque Constant | mNm/A | 16.9 | 33.1 |

Front Mounting Face



GS38.****

| | Ratio | Effic % | Max Torque Cont. (Nm) | Max Torque Inter. (Nm) | L1 (mm) |
|-----------|-------|---------|-----------------------|------------------------|---------|
| GS38.0018 | 18:1 | 74 | 0.2 | 0.6 | 23.20 |
| GS38.0030 | 30:1 | 74 | 0.2 | 0.6 | 23.20 |
| GS38.0060 | 60:1 | 67 | 0.3 | 0.9 | 25.70 |
| GS38.0100 | 100:1 | 67 | 0.6 | 1.8 | 25.70 |
| GS38.0200 | 200:1 | 61 | 0.6 | 1.8 | 28.20 |
| GS38.0500 | 500:1 | 55 | 0.6 | 1.8 | 30.70 |
| GS38.0900 | 900:1 | 55 | 0.6 | 1.8 | 30.70 |



3-38/14** + GS38.****

| | Rated Torque | Ratio | Efficiency | Approx Torque Nm | 12v RPM | 24v RPM |
|-----------------------|--------------|-------|------------|------------------|---------|---------|
| 3-38/14** + GS38.0018 | 24.5 | 18 | 0.74 | 0.33 | 300.00 | 286.11 |
| 3-38/14** + GS38.0030 | 24.5 | 30 | 0.74 | 0.54 | 180.00 | 171.67 |
| 3-38/14** + GS38.0060 | 24.5 | 60 | 0.67 | 0.98 | 90.00 | 85.83 |
| 3-38/14** + GS38.0100 | 24.5 | 100 | 0.67 | 1.64 | 54.00 | 51.50 |
| 3-38/14** + GS38.0200 | 24.5 | 200 | 0.61 | 2.99 | 27.00 | 25.75 |
| 3-38/14** + GS38.0500 | 24.5 | 500 | 0.55 | 6.74 | 10.80 | 10.30 |
| 3-38/14** + GS38.0900 | 24.5 | 900 | 0.55 | 12.13 | 6.00 | 5.72 |